

KFD 25LT 950g

■ DESCRIPTION

This high density polyethylene (HDPE) drum is suitable for storage, handling and transportation of chemical products or foodstuffs. Standard colour is natural.

■ PRODUCT

| | | |
|---------------------------------------|--|-------|
| Nominal/Brimful Capacity (litres): | 25,0 / 26,8 | ±2.0% |
| Nominal Tare Weight (g): | 950g | ±5.0% |
| Minimum Internal Test Pressure (kpa): | 200 | |
| Body Material: | High Molecular Weight HD Polyethylene | |
| PCR Content: | 0% | |
| Fabrication: | Extrusion blow moulded | |
| Embossings: | UN approval, Date, Recycling symbol, Manufacturers sign. | |

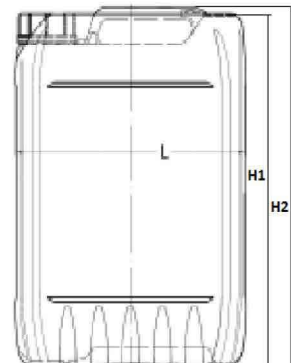
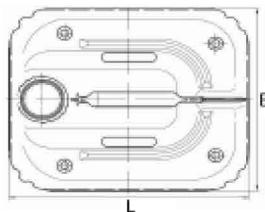


■ APPROVALS

| | |
|-------------|-----------------------------|
| UN marking: | 3H1/Y1.9/200/**B/AST-130047 |
|-------------|-----------------------------|

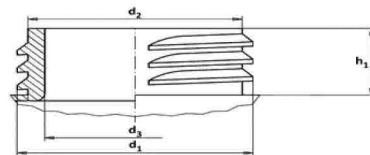
■ BODY DIMENSIONS

| | | |
|----------------------|--------------|---------|
| Height: | 449 mm | ±6.0 mm |
| H Stacking Height: | 442 mm | ±6.0 mm |
| Label Panel L x H | 190 x 175 mm | ±6.0 mm |
| B x L Cross Section: | 250 x 290 mm | ±6.0 mm |



■ NECK TYPE

| | | |
|-----------------------------|---|---------|
| Neck Thread Formation: | External, with tamper evident ratchet | |
| Position: | Centre of cap 40mm from edge of drum on mould part line | |
| Height (h1) | 22,4 mm | ±1.0 mm |
| External diameter (d1) | 59,0 mm | ±1,5 mm |
| Internal diameter (d2) | 54,0 mm | ±1,5 mm |
| Internal neck diameter (d3) | 48,5 mm | ±1,5 mm |
| Pitch of Thread | 6 | |

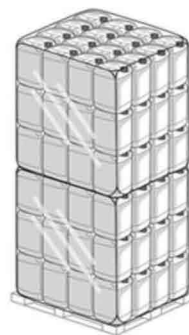


■ CLOSURE SYSTEM

| | |
|-----------------------|--|
| Type: | Screw cap DIN 61 (Vent and Non Vent), made from HDPE |
| Closing Torque: | 23-25 Nm at ambient temperature |
| Closure sealing type: | EPE foam gasket |

■ SHIPPING

| | Packaging |
|-------------------------------------|-------------|
| Bale/Pallet dimensions: | 1200 x 1000 |
| Drums quantity on one layer | 12 |
| Layers of drums on one pallet/bale | 3/3 |
| Drums quantity on one pallet/bale: | 48/48 |
| Pallets quantity in one full truck: | 26 |
| Palletisation height: | 2.79m |
| Polymer Weight Per Pallet: | 91.2kg |
| Packaging tape UN colour: | Black |
| Quantity in one full truck load: | 2,496 |



DECLARATION OF COMPLIANCE

| | |
|---------------------------------|---|
| 1.) Generally | ■ EU-Framework Regulation on material and articles intended for food contact: (EC) No 1935/2004 |
| 2.) Raw Materials / Composition | |
| EU-regulations: | ■ Regulation (EU) No 10/2011 and amendments |
| Non-EU-regulations | ■ FDA 21 CFR 177.1520 |

ADDITIONAL DETAILS

It is the fillers responsibility to check chemical and physical compatibility between the container and product filled.

Quality Assurance Department

Q0950 Issue: A Revision: 4

Date: 01/12/2021

Approved by: D S Cunningham

