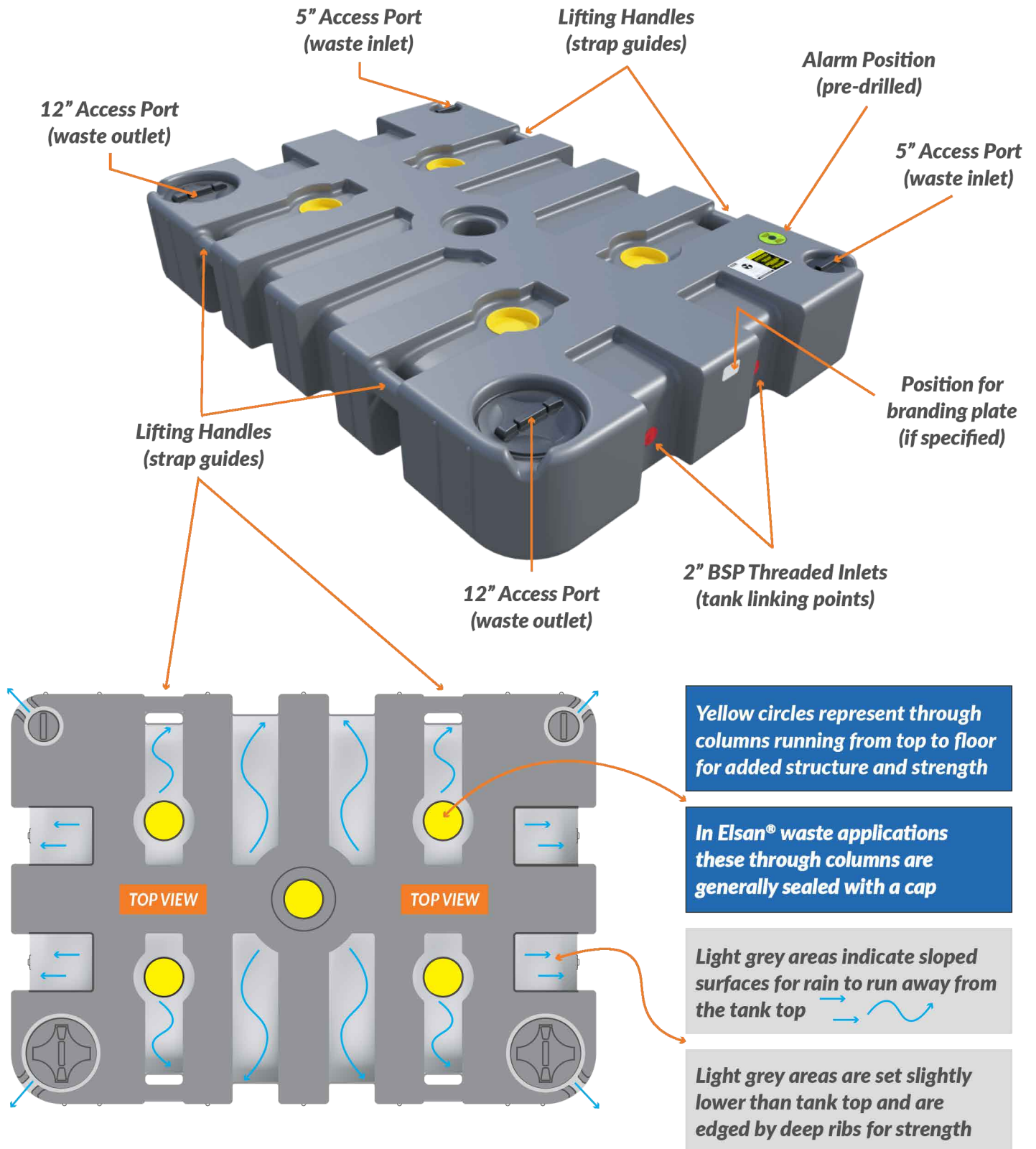


# Tuff Tank Features



Web: [www.kingfisherdirect.co.uk](http://www.kingfisherdirect.co.uk)

Email: [info@kingfisherdirect.co.uk](mailto:info@kingfisherdirect.co.uk)

Phone: 01777 858009

# Tuff Tank - Plastic Effluent Tank

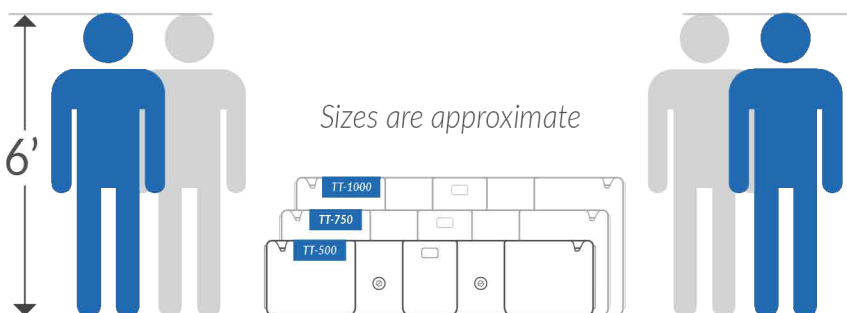
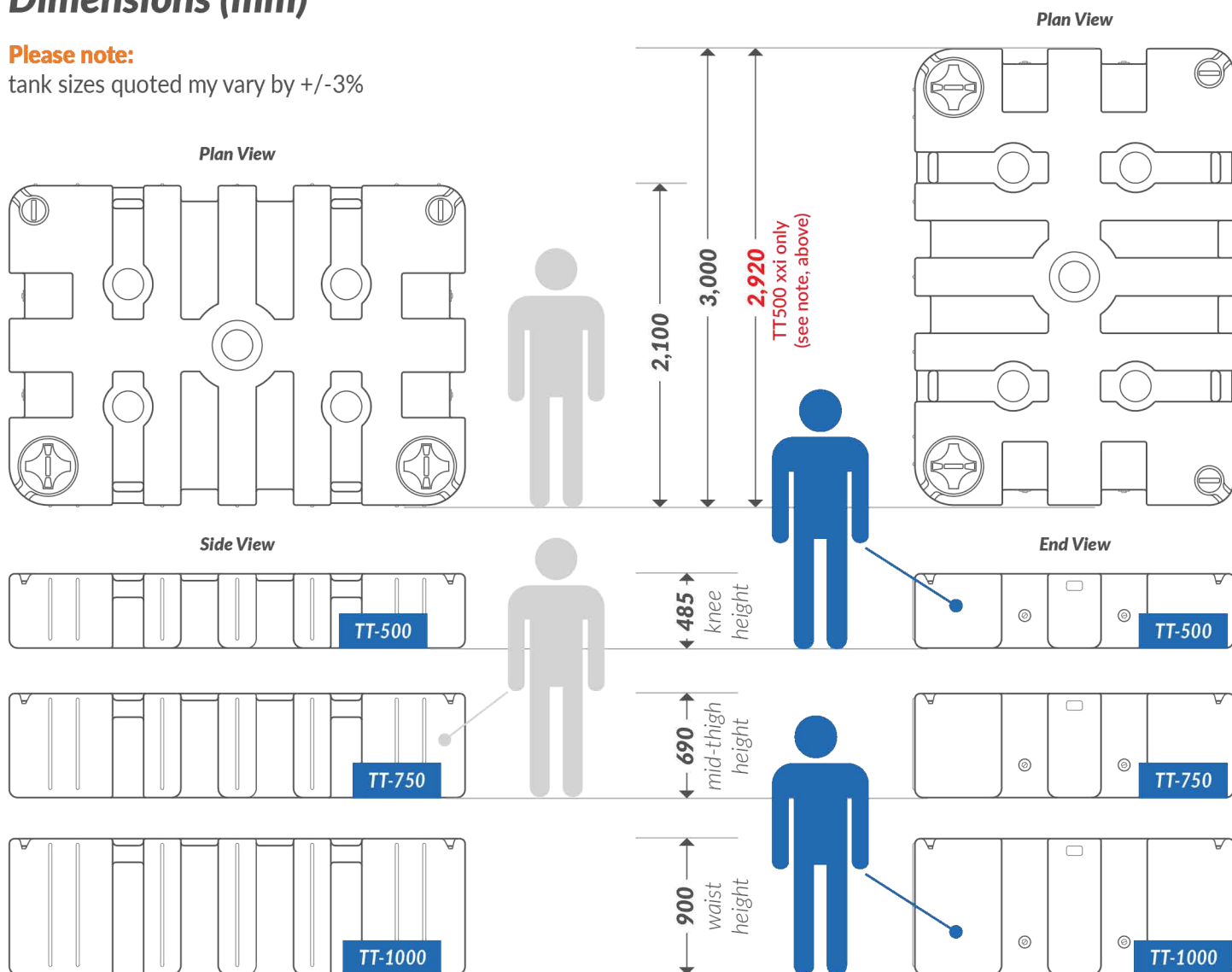
## Dimensions (mm)

**Please note:**

tank sizes quoted may vary by +/-3%

**PLEASE NOTE:**

All TT4 models (TT500, TT750 & TT1000) launched in Jan 2019 are 3000mm long. The TT5 model (TT500 xxi) was launched in April 2021 to cope with huge Covid demand. It moulds in a quicker, smaller oven, was sized at 2920mm long and is available as a 500 gallon model only



Web: [www.kingfisherdirect.co.uk](http://www.kingfisherdirect.co.uk)

Email: [info@kingfisherdirect.co.uk](mailto:info@kingfisherdirect.co.uk)

Phone: 01777 858009

# Tuff Tank - Plastic Effluent Tank

## Technical Details\*

**Tuff Tank - the first, and still the best.**

Detail	TT-500	TT-750	TT-1000
Volume (Litres / Gallons)	2,273 / 500	3,410 / 750	4,546 / 1,000
Length (mm)	3,000 mm (2920 mm for TT500 launched April 2021)		
Width (mm)	2,100 mm		
Height (mm) - see <b>Note 1</b>	485 mm	690 mm	900 mm
Dry Weight (KG) - ONLY MOVE, LIFT OR STACK WHEN EMPTY	140 KG	180 KG	220 KG
Wet Weight (KG)	2,413 KG	3,590 KG	4,766 KG
Flush capacity [@ 4 litre cistern flush]	567 flushes	854 flushes	1,138 flushes
Flush capacity [@ 6 litre cistern flush]	378 flushes	569 flushes	758 flushes
Shower capacity [@ 40 litres / shower] - see <b>Note 2</b>	57 showers	85 showers	114 showers
Elsan® Cartridge Empties [@ 12 litre chamber] - see <b>Note 3</b>	189 empties	284 empties	379 empties
Elsan® Cartridge Empties [@ 15 litre chamber]	151 empties	227 empties	303 empties
Elsan® Cartridge Empties [@ 21 litre chamber]	108 empties	162 empties	216 empties
High Level Alarm available	For all tanks		
Alarm (when fitted) notification at	1,929 litres	2,904 litres	3,870 litres
Linking Kits available	Side-to-side or nose-to-tail - for all tanks		
Standard Stock Colour	Glossy Black	Further colours on request	
	Further Details:		
<b>Note 1: Please allow clearance above tank for connecting inlet pipework e.g. 110mm</b>	2 x Ø 5" / 125mm inlet hatches with screw cap and tether		
<b>Note 2: Average shower duration is 5 to 8 minutes @ 8 litres flow per minute</b>	2 x Ø 12" / 300mm extraction hatches with screw cap and tether		
<b>Note 3: Each user will create an average of 2½ litres of toilet waste per day</b>	4 x inbuilt lifting handles and sling guides		
<b>MATERIAL: Tank is made from MDPE (medium density polyethylene)</b>	Deep forklift slots		
<b>Important Note: NOT DESIGNED TO BE STACKED OR MOVED WHEN FULL</b>	Transportable and stackable when empty - on flat or long edges		

**\*Please note:** tank sizes quoted are subject to a +/-3% variation. We reserve the right to amend the technical specification to improve the product without prior notification. Plastic process and material guarantee: 2 years based on UV8. This guarantee excludes damage due to misuse. These tanks are not warrantied / designed to be stacked / moved when full.

Web: [www.kingfisherdirect.co.uk](http://www.kingfisherdirect.co.uk)

Email: [info@kingfisherdirect.co.uk](mailto:info@kingfisherdirect.co.uk)

Phone: 01777 858009





# Tuff Tank - Plastic Effluent Tank



Tough,  
lightweight,  
flexible.

## So much better than any steel tank

If you have been struggling to deliver heavy, steel waste tanks, it's high time you switched to our lightweight and robust Tuff Tank. Easy to clean and not prone to unsightly rust, this tank is the long-term, clear product of choice for liquid waste. Tuff Tanks are used from construction site to weekend outdoor event, and from campsite to glampsite.



## Technical Advantages

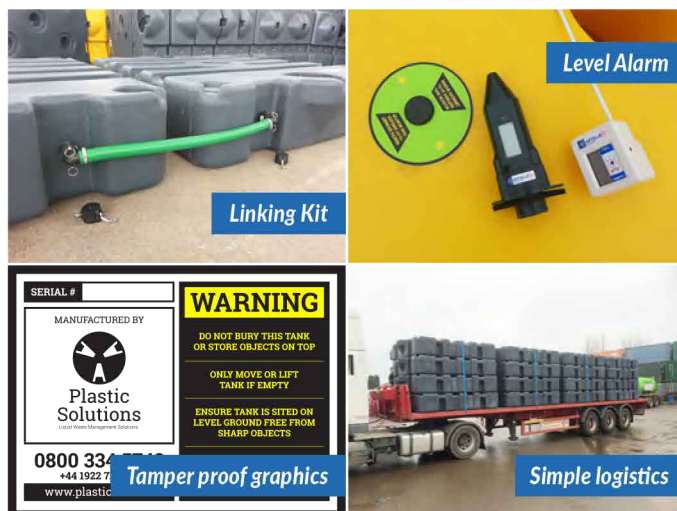
- Built in lifting handles and sling points
- Non-removable, unique serial number for traceability
- Non-removable, high contrast instructions and warning signs. In-mould graphic is permanent.
- Sloped upper surfaces to drain off rainwater
- Sealed access ports protect against spillage and odour
- Increase volume by linking several tanks together to extend the period between waste pump outs
- Linkable in two directions: side-to-side; nose-to-tail
- Stackable, rust-free, hygienic - flexibility guaranteed

## Applications

- Construction sites
- Outdoor events
- Campsites and glamping sites
- Pleasure boat toilet waste tipping points

## Upgrade Kits

- Linking kits to expand capacity
- Toilet connector kit
- Odour trap
- Cost-effective level monitoring alarm
- Elsan tipping point for chemiloo waste



Web: [www.kingfisherdirect.co.uk](http://www.kingfisherdirect.co.uk)

Email: [info@kingfisherdirect.co.uk](mailto:info@kingfisherdirect.co.uk)

Phone: 01777 858009