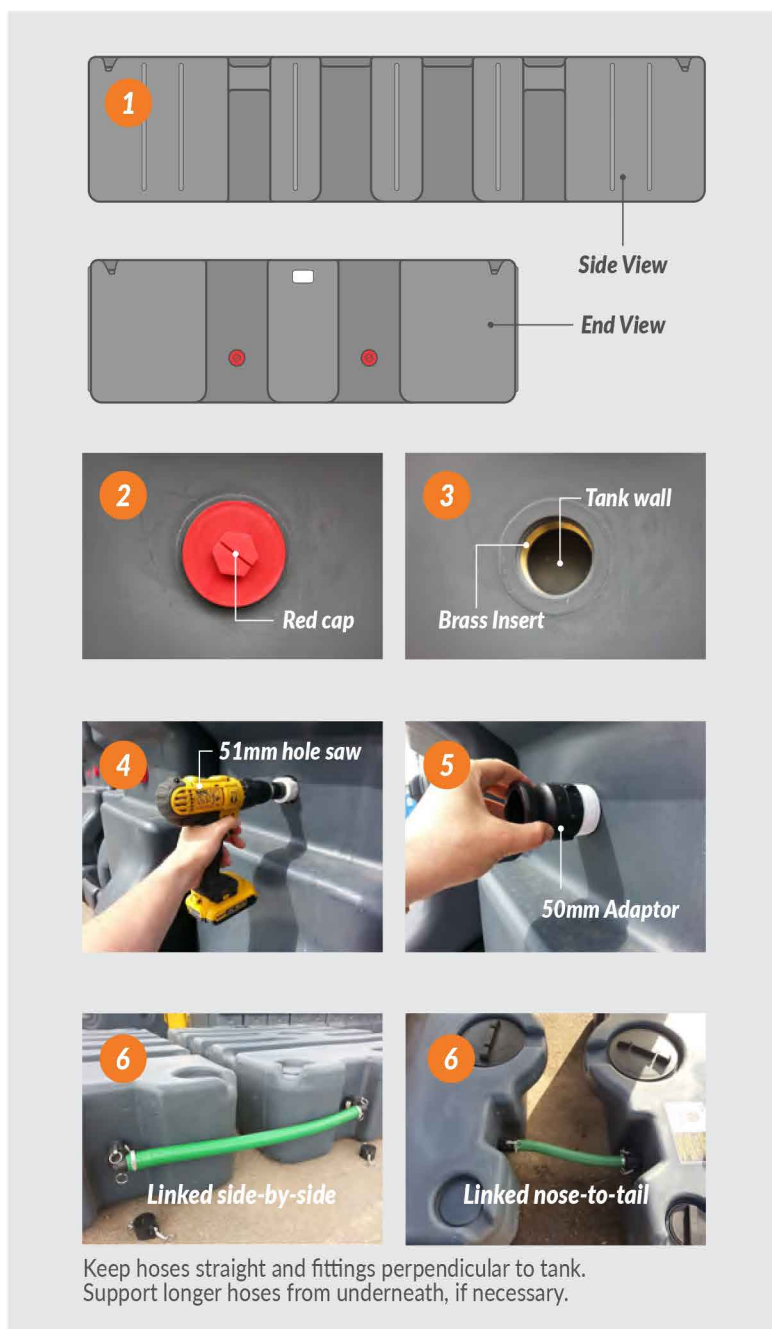


# Tank Linking Instructions

## 500, 750 & 1000 gallon tanks

- 1 **Lay tank flat** and ensure it is **empty** because you will be making a hole through the skin of the tank!
- 2 To convert each tank, **remove the red (or yellow) caps** to reveal the **52mm BSP brass inserts** (2 at each end).
- 3 Visualise how you want the linking kit to work and select the **appropriate inserts** you wish to convert (either for "side-by-side" or "nose-to-tail" linking).  
  
**NOTE:** The plastic exposed once red cap is removed is the wall of the tank and will need to be holed (drilled out) to allow the contents to flow through.
- 4 Use a **51mm hole saw** to **drill through** the centre of the port, **inside** the BSP brass threaded insert.
- 5 **Screw** the **50mm male threaded tank adaptor** into the BSP brass insert. Use **PTFE tape** around the tank adaptor threads to create a **watertight seal**.
- 6 **Connect the linking pipe.** Always ensure that the linking pipe and tank fittings are **perpendicular to each other** to create a leak-free connection.

**NOTE:** When tanks are not linked, fit the 50mm dust caps over the tank adaptors, ensuring that the dust caps' locking rings are folded over securely. Your tank will now work as a single, standalone tank again.



## Additional Notes

- Always ensure tank is **empty** before carrying out any conversions or when returning tanks to stand alone use
- Multiple tanks can be linked to create the waste volume you require e.g. 3 side-by-side link kits will link 4 tanks
- Linked tanks must be same volume and at same level
- Tanks must not be stacked with contents on board
- Keep linking pipes and fittings perpendicular to tank
- Custom hose lengths are available - **call for details**

Web: [www.kingfisherdirect.co.uk](http://www.kingfisherdirect.co.uk)

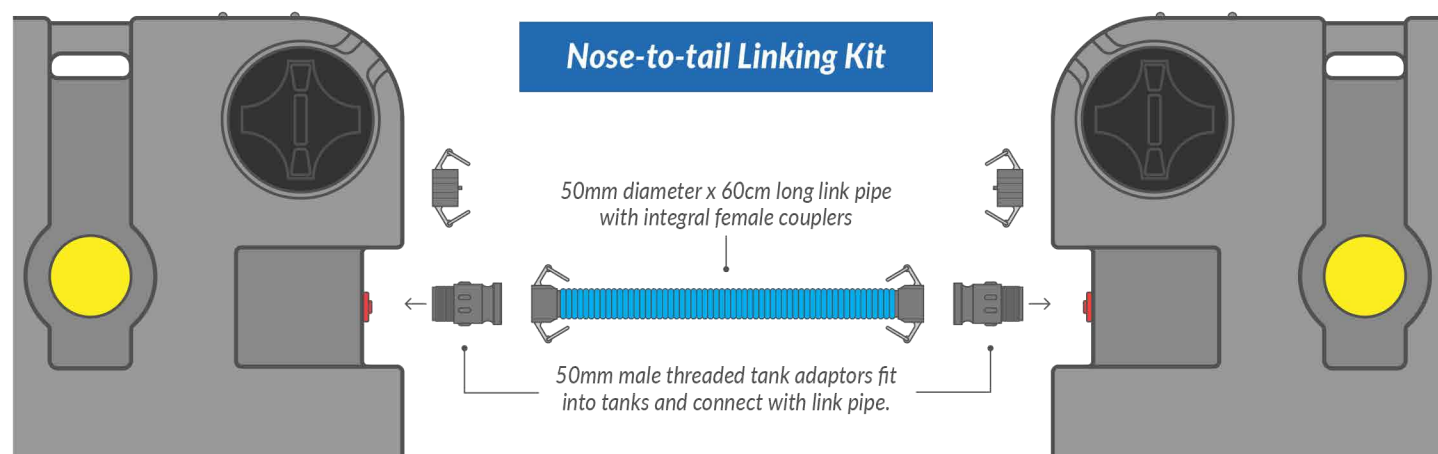
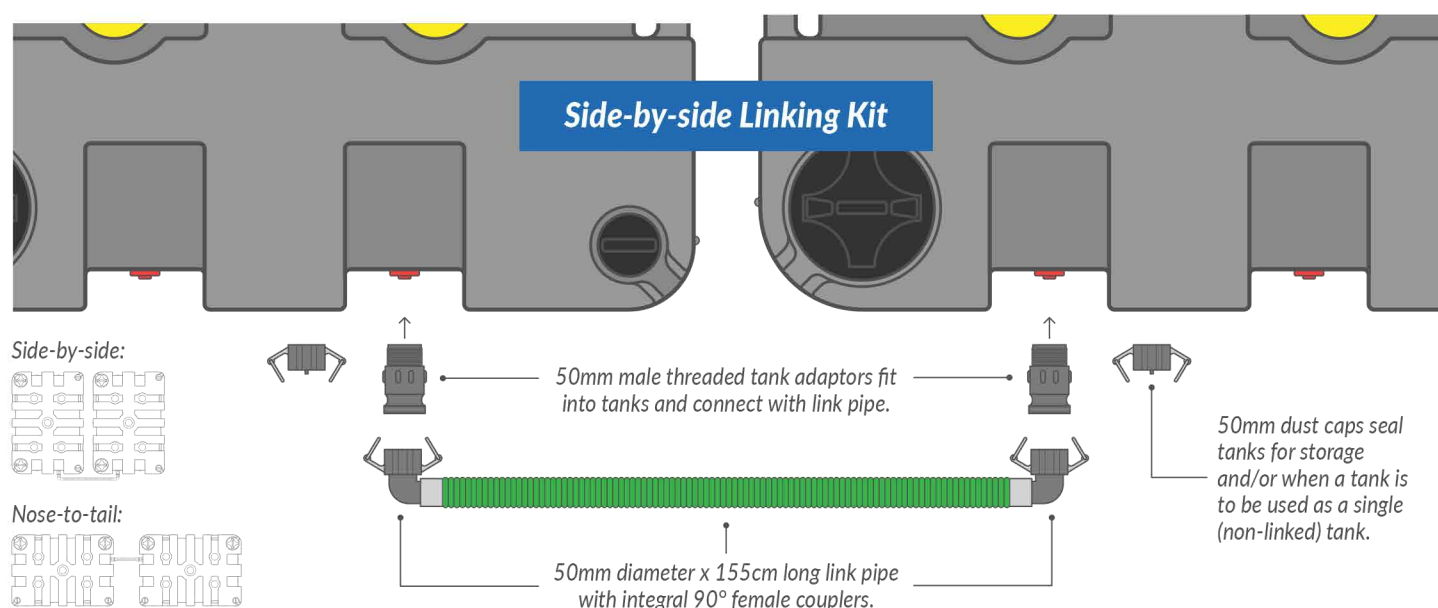
Email: [info@kingfisherdirect.co.uk](mailto:info@kingfisherdirect.co.uk)

Phone: 01777 858009

# Linking two or more Tuff Tanks

Easily extend the volume of waste you capture by using our linking kit to connect two or more tanks together.

**Valid for:** all Tuff Tank variants since January 2015.  
TT3, TT500, TT750 & TT1000.



## Flexibility - you choose...

With options to link tanks **side-by-side** or **nose-to-tail**, two easily accessible ports at each end of the tank allow simple connection from one tank to another... and so on... to give even greater flexibility on site.



**If you no longer need tanks to be linked you can easily convert them back into single, standalone versions. Simply empty the contents, remove the link pipe and fit the 50mm dust caps to the tank adaptors.**

Web: [www.kingfisherdirect.co.uk](http://www.kingfisherdirect.co.uk)

Email: [info@kingfisherdirect.co.uk](mailto:info@kingfisherdirect.co.uk)

Phone: 01777 858009